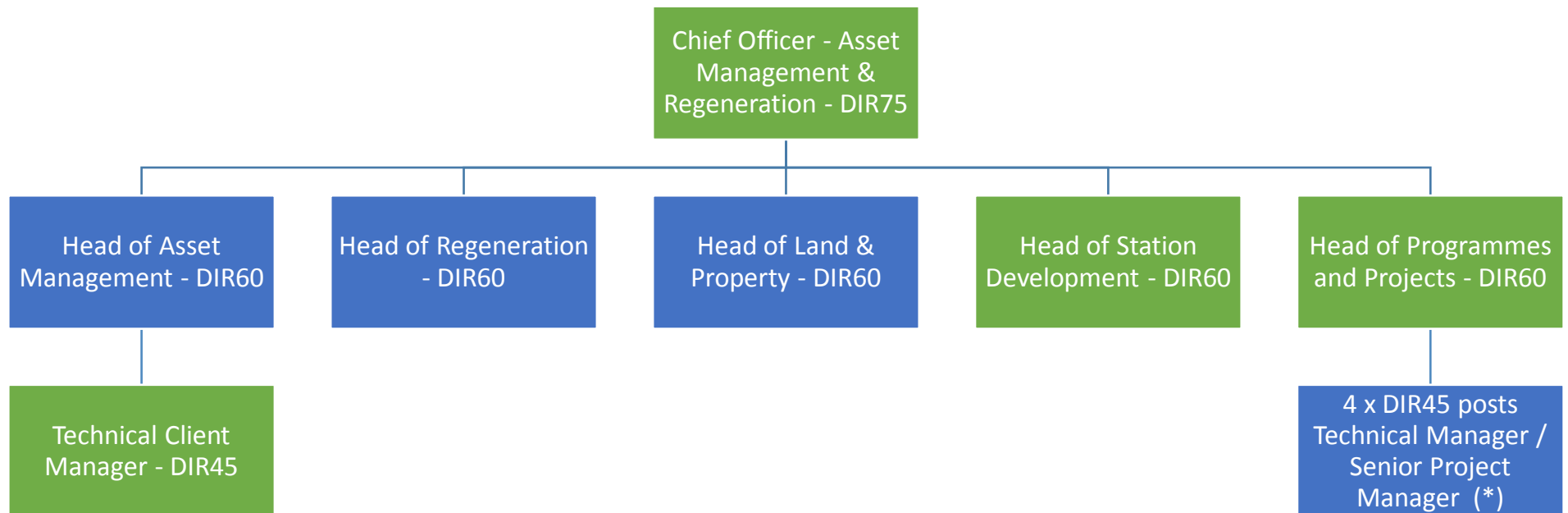
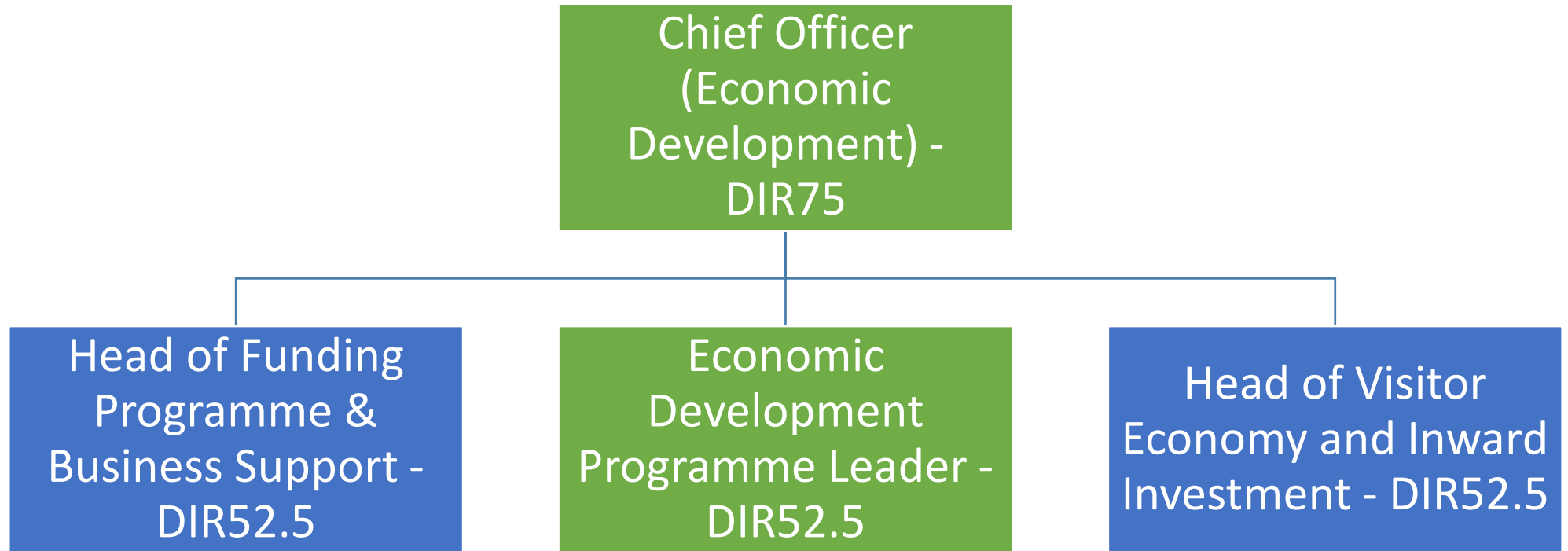


# CITY DEVELOPMENT (Asset Management)

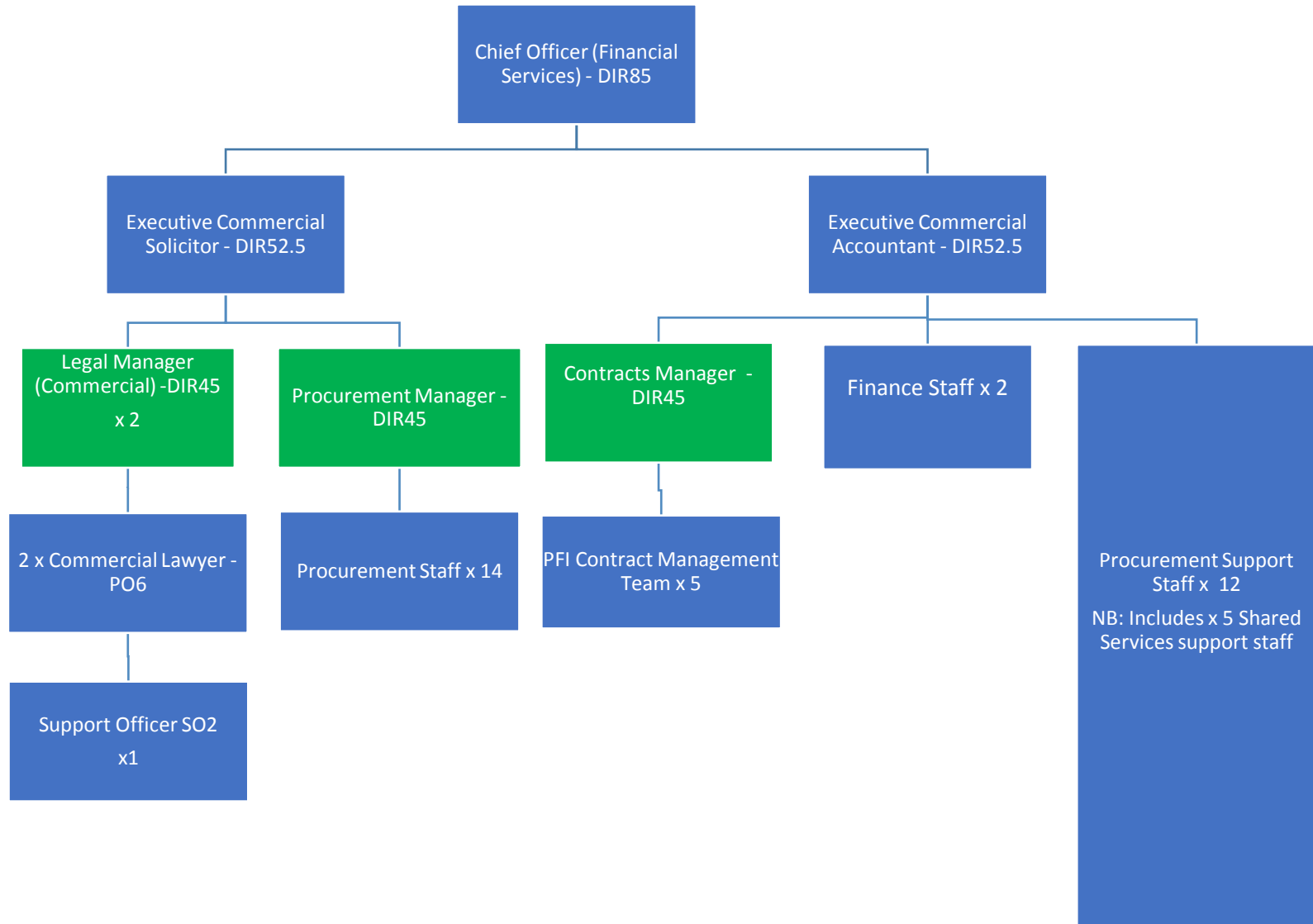


- (\*) These posts will continue with current areas of work and / or be flexibly deployed as required

## CITY DEVELOPMENT (Economic Development)



# COMMERCIAL AND LEGAL



## LOW CARBON



Head of Sustainable Energy and Climate Change - DIR52.5 \*

(\*) External Secondment out of LCC

# PROPERTY AND CONTRACTS

